

CÓMO USAR UNA MASCARILLA

USE SU CUBIERTA DE TELA PARA LA CARA CORRECTAMENTE

1



Siempre lávelase las manos con agua y jabón antes de ponerse y quitarse una mascarilla.

2



Asegúrese de que la mascarilla cubra completamente su nariz, boca y mentón, con el lado coloreado hacia afuera.

3



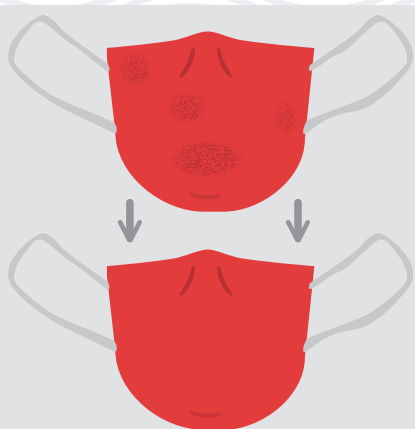
Presione la mascarilla en el puente de su nariz para mantenerla segura.

4



Para quitar una mascarilla usada, sostenga solo las orejas y levántela de las cara.

5



Cambie y deseche su mascarilla si se ensucia o moja.

6



Lávelase las manos con agua y jabón después de desechar la mascarilla usada en un bote de basura de epp designado.

Source: cdc.gov/coronavirus; Centers for Disease Control and Prevention; Reference to specific commercial products, manufacturers, companies, or trademarks does not constitute its endorsement or recommendation by the U.S. Government, Department of Health and Human Services, or Centers for Disease Control and Prevention; This material is available at cdc.gov/coronavirus for no charge.

WorkSafe™ and WorkHealthy Wyoming are programs offered by Uinta Medical Group and Evanston Regional Hospital, helping employers control rising healthcare costs through customized employee wellness, occupational health and workers comp initiatives, and to navigate the unique challenges of COVID-19. WorkSafe guidance is advisory and educational in nature and does not constitute any legal standards or regulations.

24/7 Care Coordination
(307) 288-9105

Bilingual coordinators always available.

WorkSafe